

10

Towing a Trailer

拖挂车厢

Registration and licence plate

Registration and licence plate You must have valid registration from an Alberta registry for your trailer and it must be with you when you are towing the trailer. There must also be a valid license plate attached to the rear of the trailer and clearly visible. The registration and licence plate are required before the trailer can be used on the road.

Equipment

- Your trailer must have working taillights, brake lights and turn signals that are activated from the towing vehicle.
- If you have a ball-and-socket hitch, you will also need to attach safety chains between the trailer and the towing vehicle. Chains should be crossed under the tongue of the trailer and fastened securely. This applies to all trailers except fifth-wheel trailers.
- If your trailer is equipped with a secondary emergency breakaway system, be sure that the system is connected properly according to the manufacturer's instructions.
- Adjust your vehicle's mirrors so you can see the traffic clearly that is approaching from behind. You must use extension mirrors if the trailer is wider than the vehicle that is towing the trailer.

Brakes are required on a trailer if they are needed to control the safe movement of the trailer. However, the following trailers do not require brakes:

- trailers with a gross weight of 910 kilograms (2,000 pounds) or less, or
- trailers with a gross weight that is less than half the unloaded weight of the vehicle that is doing the towing.

Towing a trailer

- Allow more time and distance than you would without a trailer between oncoming vehicles and

注册和车牌

拖挂车厢必须在注册登记处注册并获得车牌，拖行拖挂车厢时驾驶员必须携带注册登记。拖挂车厢后部必须附有清晰可见的有效车牌。拖挂车厢上路前，必须先注册和申请好牌照。

设备

- 拖挂车厢必须具有正常工作的尾灯、刹车灯和转向灯，转向信号灯由牵引车辆的驾驶员操作。
- 如果使用球窝挂钩结构，还需要在拖挂车厢和牵引车辆之间安装安全链。链条应穿过拖挂车厢的“舌下”并牢固固定。这适用于除“Fifth Wheel”拖挂以外的所有拖挂车厢。
- 如果拖挂车厢配有辅助应急分离系统，请确保按照制造商的说明正确连接该系统。
- 正确调整后视镜，以便可以清楚地看到从后面驶来的车辆。如果拖挂车比牵引车的车辆宽，则必须使用扩展后视镜。

如果需要用制动器来控制拖挂车厢的安全运行，则需要在拖挂车厢上安装刹车。但是，以下拖挂车厢不需要刹车：

- 总重不超过 910 公斤（2,000 磅）的拖挂车，或
- 拖挂车厢的总重量小于牵引车辆空载重量的一半。

拖行拖挂车厢

- 在进入交通主道时，有拖挂车厢的情况下，要和行驶过来车辆之间留出更多的时间

your own before you enter into traffic. It will take you longer to reach the speed of the traffic flow because of the extra weight of the trailer. As well, you need more space to accommodate the added length of the trailer.

- It will take you longer to stop. Increase the following distance between you and the vehicle ahead.
- If you are driving on a multi-lane highway, remember that slower moving vehicles should travel in the right lane.
- Plan your driving. Look well ahead to anticipate and manage potential hazards. Avoid situations that may require quick lane changes or unexpected stops.
- If traffic builds behind you, find a safe place to stop off the road to allow others to pass.

Turning at intersections

To turn left:

- Approach the turn slowly. When you are close to the intersection, travel near the right edge of your lane without crossing or extending any part of your vehicle or trailer into the next lane. This will give you more room to complete the turn safely.
- Begin your turn when the front of your vehicle is even with the left side of your intended lane.
- Glance occasionally in your left outside mirror at the trailer wheels during the turn. The trailer wheels will travel a path that is inside the path of the wheels of your vehicle. This is called off-tracking.
- To allow for the off-tracking, steer towards the right side of the lane on the road you are entering.
- As soon as your trailer is through the turn safely, steer the vehicle into the centre of your lane.

和距离。由于拖挂车厢的额外重量，需要更长的时间才能达到车流的速度。同样，需要更多距离来容纳拖挂车厢的额外长度。

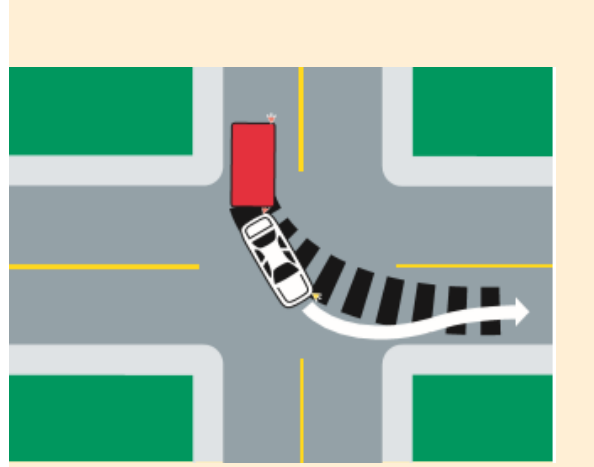
- 需要更长的时间才能停车，加大与前车之间的跟随距离。
- 如果在多车道道路上行驶，请记住，行驶缓慢的车辆应在右侧车道上行驶。
- 良好的驾驶习惯。提前观察交通状况、预判潜在的危险。避免快速变换车道或紧急停车的情况发生。
- 如果阻塞了后面的，请找到安全的地方停车，以允许后面的其他车辆超过。

在十字路口转弯

向左转:

- 慢慢靠近转弯处。当您靠近交叉路口时，尽量靠车道内右侧行驶，但不使车辆或拖挂车厢的任何部分占用旁边车道。这会提供更多空间来安全地完成转弯。
- 当车辆的前部与预计转入的车道的左侧齐平时，开始转弯。
- 在转弯时，在左侧的后视镜中观察拖挂车厢的车轮。拖挂车厢的转弯半径比牵引车辆的转弯半径要小，这称为转弯偏离。
- 考虑到转弯偏离，要转向要驶入车道的右侧。
- 拖挂车厢安全转弯后，尽快将车辆驶入车道中央。

- To turn right, reverse these directions. However, if you do not allow for the off-tracking you could make contact with a curb, a parked vehicle or a pedestrian.



Turning left when towing a trailer - note path of the vehicle and trailer wheels.

左转，注意前车和拖挂车的行车轨迹。

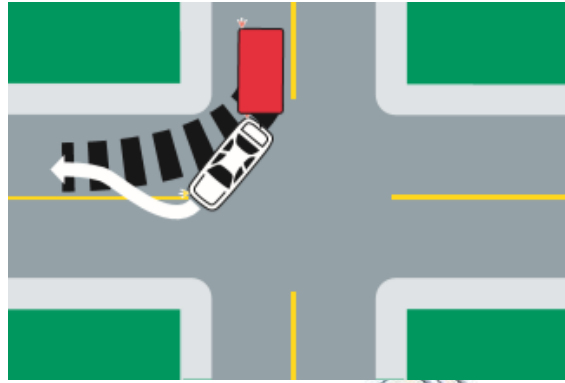
Backing a trailer

Backing a trailer takes practice. At times, to manoeuvre the trailer when reversing you will turn the steering wheel in the opposite direction than you would when reversing without the trailer.

When using a vehicle to back a trailer, do the following:

- Have someone guide you.
- If you do not have a guide, walk to the back of the trailer to be sure the path behind is clear.
- Always reverse at not more than a walking pace.

- 右转与左转时车道内的位置相反，如果考虑转弯偏离，就可能碰到路崖、停放的车或行人。



Turning right when towing a trailer - note path of the vehicle and trailer wheels.

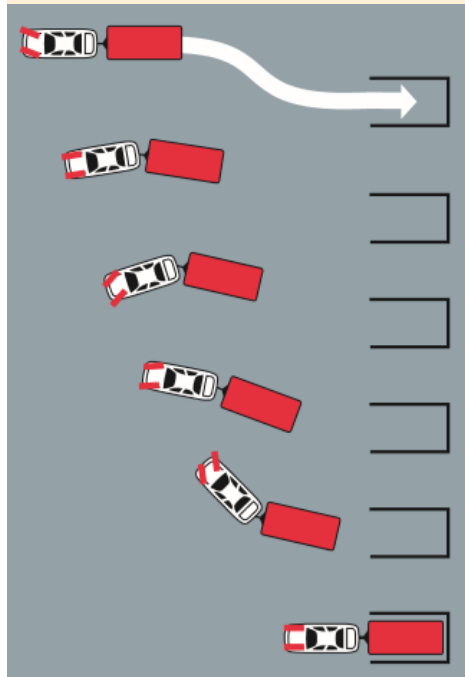
右转，注意前车和拖挂车的行车轨迹。

拖挂车厢倒车

牵引拖挂车厢倒车需要练习。因为在有拖挂车厢时和没有拖挂车厢时，方向盘的转动方向相反。

倒车时，请按以下步骤操作：

- 找人帮您指挥。
- 如果没人指挥，下车到拖车后面观察，确保倒车安全。
- 始终以不超过步行的速度倒车。



Position of the towing vehicle's tires for backing a trailer.

注意：前轮的方向与拖挂车的倒车方向相反。

Begin backing by turning the steering wheel in the opposite direction you want to go. Turn the steering wheel right to go left. Turn the steering wheel left to go right.

- To avoid having your vehicle contact the trailer, only turn the steering wheel one-quarter to one-half turn. As soon as the trailer begins to turn, return the steering wheel to the normal position. Use only small steering wheel movements to steer the trailer.

When backing a trailer to the right, be aware that your visibility is limited due to a blind spot behind the trailer.

转动方向盘，与倒车方向相反。向左倒车就向右转动方向盘，向右倒车就向左转动方向盘。

- 为避免车辆与拖挂车厢接触，方向盘转动在四分之一至半圈之间。拖挂车厢开始转弯时，尽快将方向盘返回到正常位置。仅使用小幅度转动方向盘控制拖挂车厢。

向右倒车时，请注意，由于拖车后面的盲点，视线受到限制。

平安